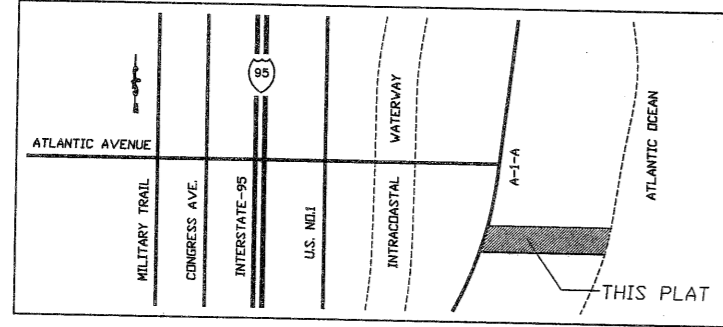


TURTLE BEACH PLAT

LYING IN GOVERNMENT LOT 1
SECTION 21, TOWNSHIP 46 SOUTH, RANGE 43 EAST,
CITY OF DELRAY BEACH, PALM BEACH COUNTY, FLORIDA

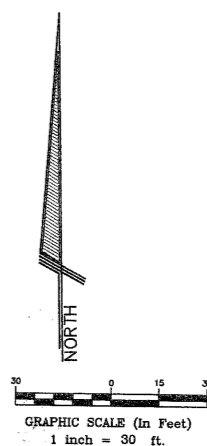
SHEET 2 OF 2
JANUARY 2006



VICINITY MAP
NOT TO SCALE

172

STATE OF FLORIDA
COUNTY OF PALM BEACH
THIS PLAT WAS FILED FOR
RECORD AT _____ THIS
____ DAY OF _____
IN PLAT BOOK No. _____
ON PAGE _____
SHARON R. BOCK
CLERK & COMPTROLLER
CIRCUIT COURT
BY: _____ D.C. _____



LEGEND

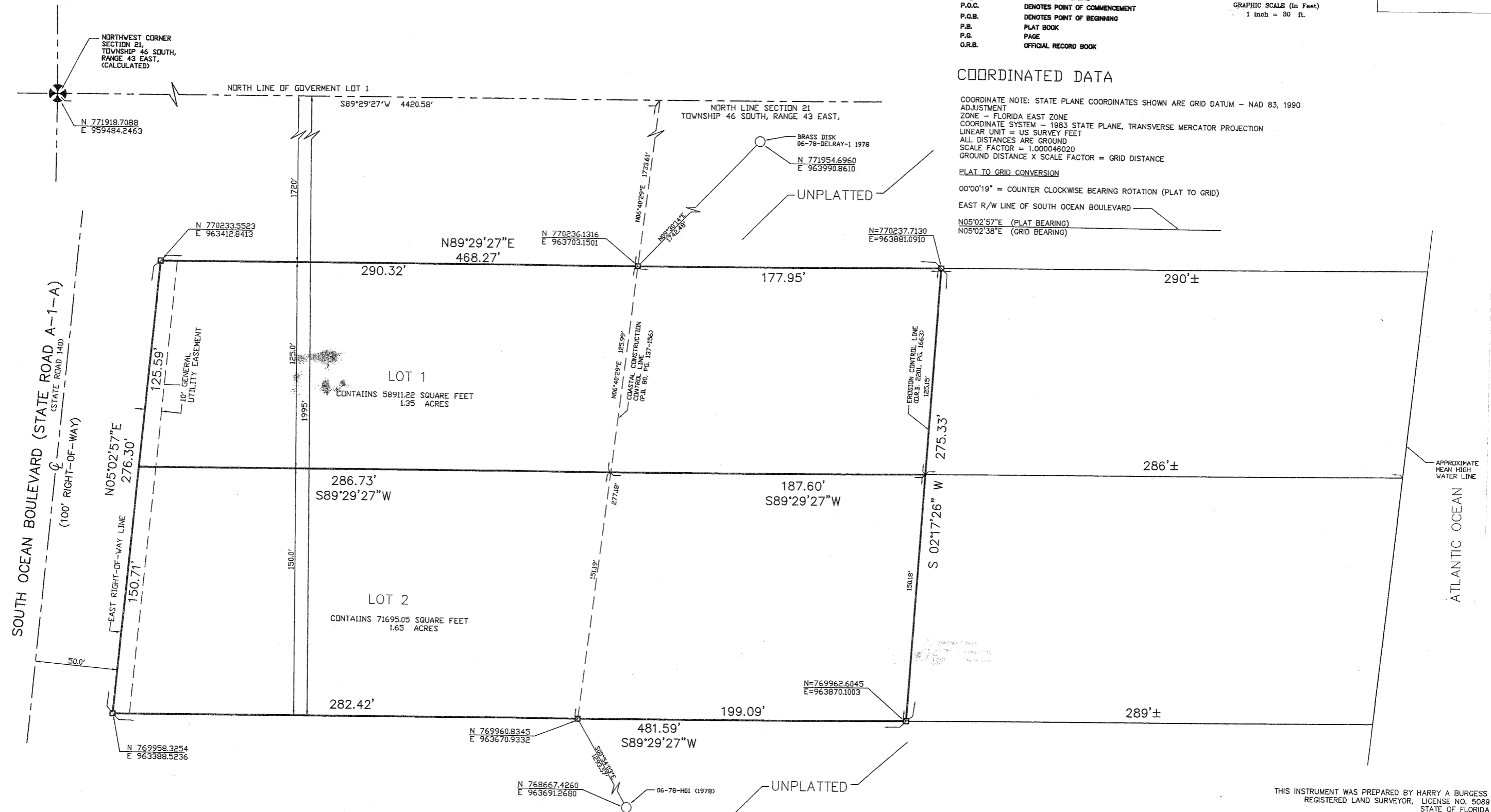
- DENOTES SET PERMANENT REFERENCE MONUMENT (P.R.M.)
- 4"x4" CONCRETE MONUMENT WITH BRASS DISK L.B. #6504
- P.R.M. DENOTES PERMANENT REFERENCE MONUMENT
- ⊕ DENOTES CENTERLINE
- P.O.C. DENOTES POINT OF COMMENCEMENT
- P.O.B. DENOTES POINT OF BEGINNING
- P.B. PLAT BOOK
- P.G. PAGE
- O.R.B. OFFICIAL RECORD BOOK

COORDINATED DATA

COORDINATE NOTE: STATE PLANE COORDINATES SHOWN ARE GRID DATUM - NAD 83, 1990
ADJUSTMENT
ZONE - FLORIDA EAST ZONE
COORDINATE SYSTEM - 1983 STATE PLANE, TRANSVERSE MERCATOR PROJECTION
LINEAR UNIT = US SURVEY FEET
ALL DISTANCES ARE GROUND
SCALE FACTOR = 1.000046020
GROUND DISTANCE X SCALE FACTOR = GRID DISTANCE

PLAT TO GRID CONVERSION
00°00'19" = COUNTER CLOCKWISE BEARING ROTATION (PLAT TO GRID)

EAST R/W LINE OF SOUTH OCEAN BOULEVARD
N05°02'57"E (PLAT BEARING)
N05°02'38"E (GRID BEARING)



THIS INSTRUMENT WAS PREPARED BY HARRY A. BURGESS
REGISTERED LAND SURVEYOR, LICENSE NO. 5089
STATE OF FLORIDA

RENNER, BURGESS, INC.
1 S.E. 4TH AVENUE
DELRAY BEACH, FL 33483
LICENSED BUSINESS #6504